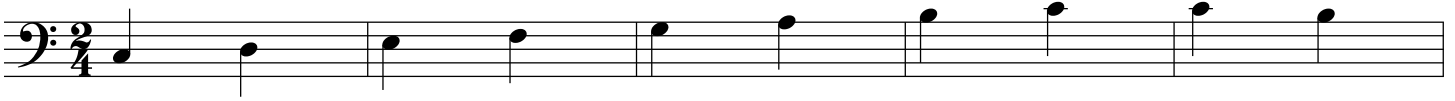


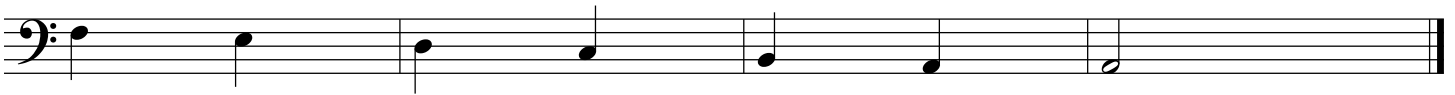
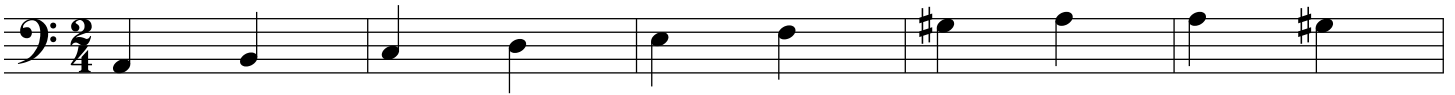
Baritone (B.C.)

Major and Minor Scales

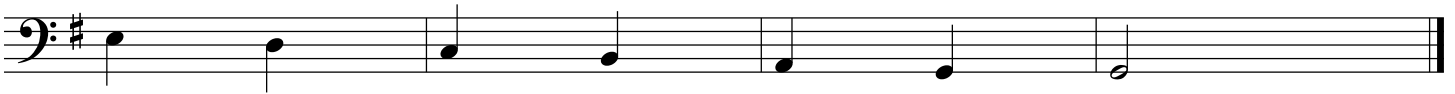
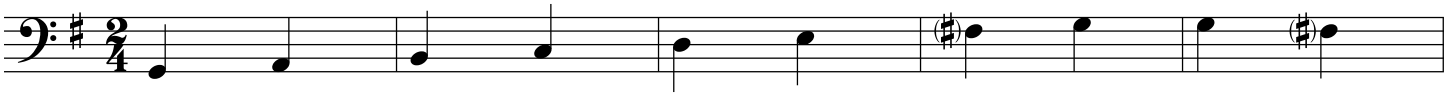
Concert C Major



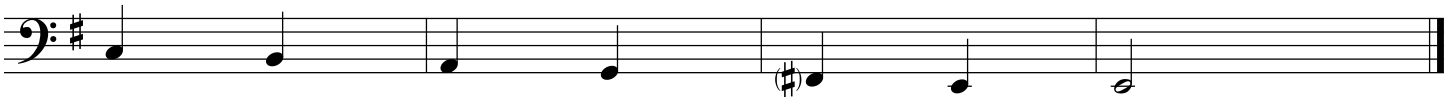
Concert A Minor



Concert G Major



Concert E Minor



Concert D Major



Baritone (B.C.)

Major and Minor Scales

Concert B Minor

Two staves of musical notation for the Concert B Minor scale. The first staff shows the ascending scale: B2, C3, D3, E3, F#3, G3, A3, B3. The second staff shows the descending scale: B3, A3, G3, F#3, E3, D3, C3, B2. The key signature has two sharps (F# and C#) and the time signature is 2/4.

Concert A Major

Two staves of musical notation for the Concert A Major scale. The first staff shows the ascending scale: A2, B2, C#3, D3, E3, F#3, G#3, A3. The second staff shows the descending scale: A3, G#3, F#3, E3, D3, C#3, B2, A2. The key signature has three sharps (F#, C#, G#) and the time signature is 2/4.

Concert F Sharp Minor

Two staves of musical notation for the Concert F Sharp Minor scale. The first staff shows the ascending scale: F#2, G#2, A2, B2, C#3, D3, E3, F#3. The second staff shows the descending scale: F#3, E3, D3, C#3, B2, A2, G#2, F#2. The key signature has three sharps (F#, C#, G#) and the time signature is 2/4.

Concert F Major

Two staves of musical notation for the Concert F Major scale. The first staff shows the ascending scale: F2, G2, A2, Bb2, C3, D3, E3, F3. The second staff shows the descending scale: F3, E3, D3, C3, Bb2, A2, G2, F2. The key signature has one flat (Bb) and the time signature is 2/4.

Concert D Minor

Two staves of musical notation for the Concert D Minor scale. The first staff shows the ascending scale: D2, E2, F2, G2, Ab2, Bb2, C3, D3. The second staff shows the descending scale: D3, C3, Bb2, Ab2, G2, F2, E2, D2. The key signature has two flats (Bb and Eb) and the time signature is 2/4.

Baritone (B.C.)

Major and Minor Scales

Concert B Flat Major

Two staves of musical notation for the Concert B Flat Major scale. The first staff shows the ascending scale: Bb2, C3, D3, Eb3, E3, F3, G3, Ab3, A3, Bb3, B3. The second staff shows the descending scale: Bb3, Ab3, G3, F3, E3, Eb3, D3, C3, Bb2. The key signature has two flats (Bb, Eb) and the time signature is 2/4.

Concert G Minor

Two staves of musical notation for the Concert G Minor scale. The first staff shows the ascending scale: G2, Ab2, Bb2, C3, D3, Eb3, F3, G3, Ab3, Bb3, C4. The second staff shows the descending scale: C4, Bb3, Ab3, G3, F3, Eb3, D3, C3, Bb2, Ab2, G2. The key signature has two flats (Bb, Eb) and the time signature is 2/4.

Concert E Flat Major

Two staves of musical notation for the Concert E Flat Major scale. The first staff shows the ascending scale: Eb2, F2, G2, Ab2, Bb2, C3, D3, Eb3, E3, F3, G3. The second staff shows the descending scale: G3, F3, Eb3, D3, C3, Bb2, Ab2, G2, F2, Eb2, Eb2. The key signature has three flats (Bb, Eb, Ab) and the time signature is 2/4.

Concert C Minor

Two staves of musical notation for the Concert C Minor scale. The first staff shows the ascending scale: C2, Db2, Eb2, F2, G2, Ab2, Bb2, C3, Db3, Eb3, F3. The second staff shows the descending scale: F3, Eb3, Db3, C3, Bb2, Ab2, G2, F2, Eb2, Db2, C2. The key signature has three flats (Bb, Eb, Ab) and the time signature is 2/4.